

SCHOOL OF

HOTEL, RESORT AND TOURISM MANAGEMENT



Everyone has expectations for their future –
And success means different things to different people.

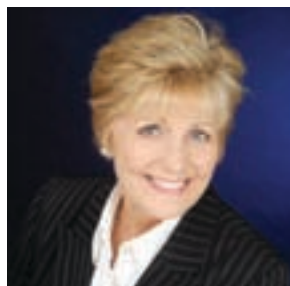
Some are happy to live life day to day.
Others - like yourself - want more.
You think bigger. You want to move faster.
You're determined to achieve something extraordinary.

At Bond University, we recognise your passion and
fast-track your progress.

**BOND UNIVERSITY.
WE SHARE YOUR AMBITION.
WE BRING IT TO LIFE.**

CONTENTS

3	Industry Partnerships
4	Your Access to an Extraordinary Life
5	Bringing Ambition to Life
7	Undergraduate Programs
9	Postgraduate Programs
12	Career Development
14	Application Procedures Domestic Students
15	Application Procedures International Students
16	Investing in Your Future



PREPARING TOMORROW'S HOTEL AND TOURISM LEADERS TODAY

Go anywhere in the hotel and tourism industries with a qualification from Bond University's School of Hotel, Resort and Tourism Management (HRTM). The tourism industry, including hotels and resorts, is the second largest industry in producing overseas funds for Australia, with outstanding employment opportunities in both the local and international marketplace.

The School's range of programs, both undergraduate and postgraduate, have been developed based on international hotel and tourism management "best practice".

Based on a foundation of core business subjects, HRTM students will be challenged to develop the conceptual, analytical, technical, and managerial skills that they will need to compete in the highly competitive international hotel and tourism industries.

The School's association with Marriott International, as our inaugural industry partner, attests to the quality and relevance of the curriculum. Close ties with the leaders of the hotel and tourism industry will result in tangible outcomes for Bond students both during and after their studies.

As one of the key tourist destinations in Australasia, the Gold Coast is an exceptional location for students to study hotel, resort and tourism management. With over 300 hotels and resorts, and dozens of major attractions within the region, students will have a working laboratory at their fingertips.

Professor Elizabeth Roberts
Head of School
School of Hotel, Resort and Tourism Management

AUSTRALIAN RANKINGS

- ★★★★★ GRADUATE SATISFACTION**
- ★★★★★ GRADUATE STARTING SALARY**
- ★★★★★ TEACHING QUALITY**
- ★★★★★ STAFF QUALIFICATIONS**
- ★★★★★ STAFF - STUDENT RATIO**
- ★★★★★ GETTING A JOB**
- ★★★★★ POSITIVE GRADUATE OUTCOMES**
- ★★★★★ GENERIC SKILLS**
- #1 GRADUATE SATISFACTION*
- #1 EDUCATIONAL EXPERIENCE*
- #1 AVERAGE GRADUATE STARTING SALARY*

*Compared to Australia's Group of Eight leading Universities, Graduate Careers Australia's 2006 Australian Graduate Survey based on 2005 Graduates
**2008 Good Universities Guide



The School of Hotel, Resort and Tourism Management has developed industry relationships with national and global hotel and tourism organisations. These associations provide exceptional opportunities for work experience and internships, both in Australia and overseas. Hands-on learning opportunities are vital to graduate success in the rapidly changing, hotel and tourism industries.

“The School’s mission is to develop world class hospitality professionals who will be the hotel and tourism leaders of the future. The Australian and international hotel and tourism industry stand to benefit greatly from this initiative, and Marriott International is proud to serve as the School’s inaugural industry partner. We look forward to a strong and long partnership. We have many Australians in our leadership ranks around Asia and believe that our support to the School will assist in ensuring that the industry needs and the school curriculum are closely aligned.”

Geoff Garside
**Executive Vice President for Asia,
Pacific and Australia**
Marriott International, Inc.



INDUSTRY ADVISORY BOARDS

Close industry ties are critical to the School’s success. In order to ensure industry relevance, we have established two industry Advisory Boards. The Executive Advisory Board includes national and international senior executives across the breadth of the tourism industry including hotels, airlines, cruise lines, tourism operations, travel companies and government tourism agencies. The Regional Advisory Board has been created to ensure that we meet the needs of our local and regional constituents.

The aim of the Advisory Boards is to support the School’s strategic plan, enhance the School’s public image, mentor current students and graduates, and monitor the relevance of the curriculum to ensure industry best practice. Advisory Board members seek to both facilitate and enable the achievement of the School’s mission and objectives by lending their support, energy, expertise and influence, and using their networks and reputation to:

- Serve as a source of independent advice to the School with regard to strategy and external relations
- Increase the engagement of the School with business, government and secondary schools
- Ensure the relevance of programs and courses within the School meet future employer needs
- Raise the profile of, and build, the ‘brand’ of Bond University’s School of Hotel, Resort and Tourism Management
- Identify possible funding sources for scholarships, internships and research

YOUR ACCESS TO AN EXTRAORDINARY LIFE



One in every nine people throughout the world is employed by the hospitality and tourism industry. Worth \$4 trillion dollars a year, these organisations comprise the largest industry in the world.

The Australian economy depends on hotels, resorts and tourism businesses for a significant portion of export earnings and job creation. The employment opportunities in this field are vast, as demand for qualified professionals exceeds supply.

A career in hotel, resort or tourism management offers exciting, dynamic and international employment prospects.

WHY STUDY HOTEL, RESORT & TOURISM MANAGEMENT AT BOND?

MANAGEMENT FOCUS

Bond's Hotel, Resort and Tourism Management programs prepare graduates for a future in senior level management within the hotel and tourism industries. Course content focuses on developing business management skills. Research has shown that exceptional career opportunities exist for hotel, resort and tourism professionals with skills in revenue management. This program equips graduates with this particular knowledge to enhance career outcomes.

STRONG INDUSTRY LINKS

The School of Hotel, Resort and Tourism Management has globally recognised industry partnerships, offering tangible student benefits, such as:

- Opportunities for domestic and international work placements during and after course of study
- Industry managers as guest lecturers
- Field trips to local hotels and tourism operators
- Opportunities to complete capstone project using a real industry case study
- Exposure to international hotel and resort management expertise

RESEARCH-DRIVEN CURRICULUM

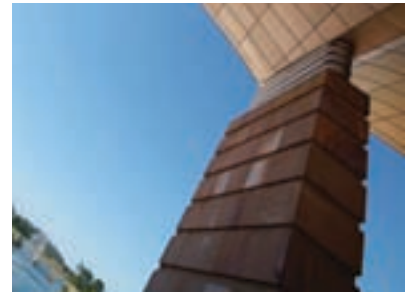
The on-going development of Hotel, Resort and Tourism Management programs is guided by an industry advisory panel, including representatives from Marriott International. Input from this group ensures that the curriculum continues to meet the changing needs of the industry.

HIGHLY EXPERIENCED TEACHING STAFF AND RESEARCHERS

More than 95% of the Faculty's academic staff hold PhDs which they blend with their real-life practical experience consulting to major corporations worldwide. Professor Elizabeth Roberts (Head of School) draws on her extensive experience with Cornell University and other institutions, to lead her international team of hotel, resort and tourism experts.

WORK READY GRADUATES

Undergraduate students will complete 400 hours of industry work experience as part of their degree, ensuring they are ready to make an immediate impact in the workplace upon graduating. This is a chance for students to test their career interests, develop practical skills, and enhance their employment prospects.



As a fully independent teaching institution, Bond University offers a unique educational experience, specifically designed to challenge students to be the very best that they can be.

ACCELERATED STUDY PROGRAM

Bond University schedules three semesters per year with intakes in January, May and September, this combined with the selected mode of study enables students to complete a master degree in a minimum of 1 year with the approval from the Faculty to accelerate.

SMALL CLASS SIZES

We have the lowest staff:student ratio of any university in Australia. Studying in small groups, you'll benefit from one-on-one access to professors who have an open-door policy and know each of their students by name.

WORLD CLASS ACADEMICS

Our teaching faculty includes pre-eminent academics of national and international standing, whose high level qualifications are matched by practical knowledge gained from consulting to major multinational corporations.

STATE-OF-THE-ART RESOURCES

Our world class campus incorporates the very latest academic and technological teaching and study facilities, with our smaller student numbers ensuring easy access. Bond is also home to a number of leading research centres equipped with state-of-the-art facilities.

BLUE-CHIP EMPLOYMENT PROSPECTS

Bond graduates have the highest percentage rate of full-time employment when compared with graduates from Australia's leading Group of Eight universities due to our extensive network of business/industry partnerships.

PRACTICAL KNOWLEDGE

Using case studies adapted from real-life scenarios and having access to resources that mirror workplace standards ensure our graduates are ready to hit the ground running from their first day on the job.

INTERNATIONAL COMMUNITY

With a 50:50 ratio of Australian and international students, Bond has a distinctively global perspective. Studying here, you'll develop friendships and future business networks with staff and students hailing from all over Australia and more than 80 overseas countries.

GLOBAL 'BONDY' NETWORK

As a Bond graduate, you will be a member of our international alumni network which now includes senior managers and prospective employers in major corporations all over the world.



UNDERGRADUATE PROGRAMS



BACHELOR OF INTERNATIONAL HOTEL AND RESORT MANAGEMENT

Duration: 2 years full-time (6 semesters) or flexible part-time options

Starting: January, May and September (from 2009)

ENTRY REQUIREMENTS

Successful completion of Year 12 or equivalent

PROGRAM DESCRIPTION

The Bachelor of International Hotel and Resort Management program prepares students for professional and managerial roles in the global hotel and resort industry. Students complete a program of core business subjects and advanced hotel and resort management subjects to prepare them for management roles. Emphasis is placed on revenue and asset management within a hotel or resort context.

PROFESSIONAL OUTCOMES

Potential career pathways for Bachelor of International Hotel and Resort Management graduates include -

- Hotel and Resort Revenue Management
- Hotel and Resort Valuation
- Hotel and Resort Marketing
- Hotel and Resort Planning and Development
- Hospitality Consulting

PROGRAM STRUCTURE - 24 SUBJECTS

University Core Subjects (4)

Foundation Subjects (10)

Students must complete the following 10 subjects:

- Introduction to Accounting
- Principles of Economics
- Marketing
- Organisational Behaviour
- Human Resource Management
- Operations Management
- Business Law
- Business Statistics
- Introduction to Finance
- Introduction to the Hotel and Tourism Industry

Advanced Discipline Subjects (6)

Students must complete the following 6 subjects:

- Hotel and Tourism Marketing
- Rooms Division Management
- Food and Beverage Management
- Hotel Facilities, Development and Design
- Strategic Pricing and Revenue Management
- Capstone Project[^]

Electives (3)

Students must select an additional three elective subjects to complete their program. One elective must be chosen from within the Faculty of Business, Technology and Sustainable Development, and two electives may be chosen from any Faculty within the University.

WORK EXPERIENCE

Students will complete 400 hours of work experience in a hotel, resort or associated industry to complement their theoretical knowledge with practical skills.

[^] Denotes 20 credit point subject

UNDERGRADUATE PROGRAMS



BACHELOR OF TOURISM MANAGEMENT

Duration: 2 years full-time (6 semesters) or flexible part-time options

Starting: January, May and September (from 2009)

ENTRY REQUIREMENTS

Successful completion of Year 12 or equivalent

PROGRAM DESCRIPTION

The Bachelor of Tourism Management program prepares students for professional and managerial roles within the global tourism industry. Students complete a program of core business and advanced tourism subjects designed to develop their financial, analytical, and management skills.

PROFESSIONAL OUTCOMES

Potential career pathways for Bachelor of Tourism Management graduates include -

- Tourism Operations
- Attractions and Theme Parks
- Airlines
- Gaming
- Tourism Planning and Strategy
- Transportation
- Tourism Marketing
- Tourism Development
- Tourism Human Resource Management

PROGRAM STRUCTURE - 24 SUBJECTS

University Core Subjects (4)

Foundation Subjects (9)

Students must complete the following 9 subjects:

- Introduction to Accounting
- Principles of Economics
- Marketing
- Organisational Behaviour
- Operations Management
- Business Law
- Business Statistics
- Human Resource Management
- Introduction to the Hotel and Tourism Industry

Advanced Discipline Subjects (6)

Students must complete the following 6 subjects:

- Global Tourism
- Tourism in Australia
- Ecotourism
- Hotel and Tourism Strategic Management
- Tourism and Indigenous Cultures
- Capstone Project[^]

Electives (4)

Students must select an additional four elective subjects to complete their program. Two electives must be chosen from within the Faculty of Business, Technology and Sustainable Development, and two electives may be chosen from any Faculty within the University.

WORK EXPERIENCE

Students will complete 400 hours of work experience in a hotel, resort or associated industry to complement their theoretical knowledge with practical skills.

[^] Denotes 20 credit point subject



MASTER OF INTERNATIONAL HOTEL AND RESORT MANAGEMENT

Duration: 4 Semesters* full-time or part-time options available

Starting: January, May and September (from 2009)

*Students have the option of accelerating their Masters degree program and completing it within 3 semesters (1 year) with Faculty approval.

ENTRY REQUIREMENTS

Successful completion of a recognised Bachelor degree or qualifications and/or relevant professional experience deemed equivalent by the Faculty Dean.

PROGRAM DESCRIPTION

The Master of International Hotel and Resort Management program is designed for students requiring advanced knowledge about the hotel and resort industry. Students complete a program of core business and advanced hotel and resort management subjects designed to enhance their financial, analytical and managerial skills. This program prepares students for senior professional and management roles. Industry demand for Hotel Revenue Managers is particularly high, so emphasis is placed on revenue and asset management within a hotel or resort context.

PROFESSIONAL OUTCOMES

Graduates should have highly developed analytical and management skills that will enable them to professionally advance their career prospects within the hotel and resort industry.

PROGRAM STRUCTURE

Students must complete the following subjects (9):

- International Hotel and Tourism Management
- Hospitality and Tourism Human Resource Management
- Marketing Fundamentals
- Accounting Principles
- Behaviour in Organisation
- Managerial Finance
- Statistical Applications in Hospitality and Tourism Management
- Hospitality and Tourism Strategic Management
- Capstone Project[^]

Electives (2)

Students must select an additional two elective subjects from within the Faculty of Business, Technology and Sustainable Development to complete their program.

[^]Denotes 20 credit point subject.

The Master of International Hotel and Resort Management has built-in exit points within the program. Students can graduate with a Graduate Certificate or Postgraduate Diploma after 1 or 2 full-time semesters respectively.

MASTER OF INTERNATIONAL HOTEL AND RESORT MANAGEMENT (PROFESSIONAL)

Duration: 4 semesters plus 20 week Work Integrated Learning (92 weeks)

Starting: January, May and September (from 2009)

ENTRY REQUIREMENTS

Successful completion of a recognised Bachelor degree or qualifications and/or relevant professional experience deemed equivalent by the Faculty Dean.

PROGRAM STRUCTURE

Students must complete all subjects from the Master of International Hotel and Resort Management program structure above and then have the option of undertaking a 20 week Work Integrated Learning subject.

Work Integrated Learning is designed to promote and support student learning, personal development and professional practice. Students are responsible for sourcing industry projects themselves and are mentored by academic staff and their industry sponsor with agreed-upon learning objectives. Assessment includes planning documents, regular meetings with their academic mentor and industry sponsor, a final report presentation to peers, academic mentor and industry sponsor. The subject aims to: facilitate students' self-analysis and reflective issues and problems; and apply theoretical knowledge in seeking solutions for practical workplace problems.

POSTGRADUATE PROGRAMS

GRADUATE CERTIFICATE IN INTERNATIONAL HOTEL AND RESORT MANAGEMENT

Duration: 1 semester full-time or flexible part-time options
Starting: January, May and September (from 2009)

ENTRY REQUIREMENTS

Successful completion of a recognised Bachelor degree or qualifications and/or relevant professional experience deemed equivalent by the Faculty Dean.

PROGRAM DESCRIPTION

The Graduate Certificate in International Hotel and Resort Management is a course of study comprised of business and hotel management subjects, and is designed for those wishing to advance their careers within the hotel and resort industries.

PROFESSIONAL OUTCOMES

This program prepares graduates for supervisory positions within the hotel and resort industry.

PROGRAM STRUCTURE

Students must complete the following subjects (4):

- International Hotel and Tourism Management
- Hospitality and Tourism Human Resource Management
- Marketing Fundamentals
- Accounting Principles

POSTGRADUATE DIPLOMA OF INTERNATIONAL HOTEL AND RESORT MANAGEMENT

Duration: 2 semesters full-time or flexible part-time options
Starting: January, May and September (from 2009)

ENTRY REQUIREMENTS

Successful completion of a recognised Bachelor degree or qualifications and/or relevant professional experience deemed equivalent by the Faculty Dean.

PROGRAM DESCRIPTION

The Postgraduate Diploma of International Hotel and Resort Management has been designed to enhance students' analytical, financial and management skills.

PROFESSIONAL OUTCOMES

The program prepares graduates for management positions in the global hotel industry.

PROGRAM STRUCTURE

Students must complete the following subjects (8):

- International Hotel and Tourism Management
- Hospitality and Tourism Human Resource Management
- Marketing Fundamentals
- Accounting Principles
- Behaviour in Organisation
- Managerial Finance
- Statistical Applications in Hospitality and Tourism Management
- Plus 1 approved elective from the Faculty of Business, Technology and Sustainable Development

MASTER OF TOURISM MANAGEMENT

Duration: 4 Semesters* full-time or part-time options available
Starting: January, May and September (from 2009)

*Students have the option of accelerating their Masters degree program and completing it within 3 semesters (1 year) with Faculty approval.

ENTRY REQUIREMENTS

Successful completion of a recognised Bachelor degree or qualifications and/or relevant professional experience deemed equivalent by the Faculty Dean.

PROGRAM DESCRIPTION

The Master of Tourism program is designed for students requiring advanced knowledge within the tourism discipline. This program prepares students for senior professional and managerial roles. Students complete a program of core business subjects and advanced tourism subjects designed to enhance their conceptual, analytical, and managerial abilities.

PROFESSIONAL OUTCOMES

Graduates should have highly developed analytical and management skills that will enable them to professionally advance their career prospects within the global tourism industry.

PROGRAM STRUCTURE

Students must complete the following subjects (9):

- Economics of Sustainable Development
- Marketing Fundamentals
- International Hotel and Tourism Management
- Tourism Destinations and Cultures
- Tourism Planning
- Hospitality and Tourism Human Resource Management
- Statistical Applications in Hospitality and Tourism Management
- Hospitality and Tourism Strategic Management
- Capstone Project[^]

Electives (2)

Students must select an additional two elective subjects from within the Faculty of Business, Technology and Sustainable Development to complete their program.

The Master of Tourism Management has built-in exit points within the program. Students can graduate with a Graduate Certificate or Postgraduate Diploma after 1 or 2 semesters respectively.

[^] Denotes 20 credit point subject



MASTER OF TOURISM MANAGEMENT (PROFESSIONAL)

Duration: 4 semesters plus 20 week Work Integrated Learning (92 weeks)
Starting: January, May and September (from 2009)

ENTRY REQUIREMENTS:

Successful completion of a recognised Bachelor degree or qualifications and/or relevant professional experience deemed equivalent by the Faculty Dean.

PROGRAM STRUCTURE:

Students must complete all subjects from the Master of Tourism Management program structure above and then have the option of undertaking a 20 week Work Integrated Learning subject.

Work Integrated Learning is designed to promote and support student learning, personal development and professional practice. Students are responsible for sourcing industry projects themselves and are mentored by academic staff and their industry sponsor with agreed-upon learning objectives. Assessment includes planning documents, regular meetings with their academic mentor and industry sponsor, a final report presentation to peers, academic mentor and industry sponsor. The subject aims to: facilitate students' self-analysis and reflective issues and problems; and apply theoretical knowledge in seeking solutions for practical workplace problems.

GRADUATE CERTIFICATE IN TOURISM MANAGEMENT

Duration: 1 semester full-time or flexible part-time options
Starting: January, May and September (from 2009)

ENTRY REQUIREMENTS

Successful completion of a recognised Bachelor degree or qualifications and/or relevant professional experience deemed equivalent by the Faculty Dean.

PROGRAM DESCRIPTION

The Graduate Certificate in Tourism Management is a course of study comprised of business and management subjects.

PROFESSIONAL OUTCOMES

This program prepares graduates for supervisory positions within the tourism industry.

PROGRAM STRUCTURE

All students must complete the following 4 subjects:

- International Hotel and Tourism Management
- Hospitality and Tourism Human Resource Management
- Tourism Planning
- Marketing Fundamentals

POSTGRADUATE DIPLOMA OF TOURISM MANAGEMENT

Duration: 2 semesters full-time or flexible part-time options
Starting: January, May and September (from 2009)

ENTRY REQUIREMENTS

Successful completion of a recognised Bachelor degree or qualifications and/or relevant professional experience deemed equivalent by the Faculty Dean.

PROGRAM DESCRIPTION

The Postgraduate Diploma of Tourism Management has been designed to enhance students' analytical, financial and management skills.

PROFESSIONAL OUTCOMES

The program prepares graduates for management positions in the global tourism industry.

PROGRAM STRUCTURE

All students must complete the following 8 subjects:

- International Hotel and Tourism Management
- Hospitality and Tourism Human Resource Management
- Tourism Planning
- Marketing Fundamentals
- Economics of Sustainable Development
- Hospitality and Tourism Strategic Management
- Tourism Destinations and Culture
- Plus 1 approved elective from the Faculty of Business, Technology and Sustainable Development

CAREER DEVELOPMENT



Bond University prides itself on the personalised service provided to students during and after their studies. We take a proactive approach to provide you with the information and resources you need to achieve your career objectives. You may be looking for a more senior position within your company or hoping to make a lateral move to a new industry. Whatever your goals may be, we are on hand to help.

CAREER COUNSELLING

Bond University offers individual career counselling sessions to help identify and support your needs. Our staff are on hand to offer advice on topics including resumes, cover letters, interviews, job search strategies and applying to graduate employers.

CAREER FORUMS

Career forums are organised by the university, recruiters and employers, and take place on a regular basis.

CAREER SPEAKER SERIES

Our high-flying Alumni often return to their Alma Mater to meet and inspire current students. They hail from varying backgrounds and boast a range of qualifications.

CAREER INTEREST GROUPS

We strive to keep up to date with marketplace developments and maximise networking and information-sharing opportunities with fellow participants and Bond Alumni.

CAREER LEADER

Developed by career management professionals at Harvard, this computer based career assessment and diagnostic tool is based on three business career self-assessment inventories and interactive interpretive tools. You can gain an in-depth insight into the unique pattern of relevant business interests, aptitudes and values, and explore the recommendations for business careers and organisational cultures that would suit your abilities, strengths and preferences.



APPLICATION PROCEDURES DOMESTIC STUDENTS



DOMESTIC STUDENTS

A domestic student is someone who is an Australian or New Zealand citizen, or a migrant holding a visa giving permanent resident status in Australia.

UNDERGRADUATE DEGREE APPLICATIONS

All Queensland residents applying for undergraduate programs at Bond University are made through the Queensland Tertiary Admissions Centre (QTAC). When applying to QTAC, you can list up to six preferences for programs offered at any participating QTAC institution. Applicants who list Bond University as one of their preferences will be contacted by a Bond University Admissions Manager to arrange an interview to assess their eligibility.

Current Year 12 students studying in Australia, can lodge their QTAC application:

- Online: Lodge an application online through QTAC's Twelve to Tertiary (TTT) web application service at www.qtac.edu.au or
- By phone: Use QTAC's 1900 phone service on 1900 971 166 or
- In writing: Submit a written QTAC Tertiary Study Application

Please note that the first two options are the preferred methods.

Non-school leavers and students transferring from another university or institution can lodge their QTAC application:

Online: Lodge an application online through QTAC's Apply by Web service at www.qtac.edu.au or
In writing: Submit a written QTAC Tertiary Study Application

POSTGRADUATE DEGREE APPLICATIONS

Applications for postgraduate degrees are made by completing an Application for Postgraduate Admission, which can be lodged online at www.bond.edu.au/apply, or with your nearest Admissions Manager or the Bond University Office of Admissions. You must include certified/notarised copies of supporting documentation.

CLOSING DATES (QTAC APPLICANTS)

Applications for the January semester close on September 30 each year. Closing dates and course information for the May and September semesters are listed on the QTAC website. While applications can be submitted after these closing dates, a late fee usually applies.

CREDIT FOR PREVIOUS STUDY

Applicants with tertiary, post-secondary, professional qualifications or relevant work experience may be eligible for subject credit in undergraduate and postgraduate programs. Applications for credit must be accompanied by certified copies of testamurs and academic transcripts of previous studies together with detailed course outlines/subject descriptions for each relevant subject.

ESSENTIAL CONTACTS

Queensland Tertiary Admissions Centre - QTAC

PO Box 1331
Milton Qld 4067
Phone: 07-3368 1166
Fax: 07-3367 1164
Website: www.qtac.edu.au

Office of Admissions

Bond University Qld 4229
Phone: 1800 074 074 (toll free - domestic students)
Phone: +61 7 5595 1024 (international students)
Fax: 07-5595 1015
Email: information@bond.edu.au (domestic students)
international@bond.edu.au (international students)
Website: www.bond.edu.au

Australian Admissions Managers

For a list of Bond University representatives in your state, please go to www.bond.edu.au/admiss/officers.htm or phone toll free 1800 074 074

APPLICATION PROCEDURES INTERNATIONAL STUDENTS

INTERNATIONAL STUDENTS

An international student is someone who is not an Australian or New Zealand citizen, nor a migrant holding a visa giving permanent resident status in Australia.

ENGLISH REQUIREMENTS

All international students must meet minimum English language requirements and provide formal documentary evidence of their English proficiency. A full list of requirements for each degree program is listed at www.bond.edu.au/study/application/ug/english-requirements.html.

VISA INFORMATION

Contact your local representative, the Office of Recruitment and Admissions or the nearest Australian diplomatic mission for further information on visa requirements.

HEALTH COVER

The Overseas Student Health Cover (OSHC) charge is an Australian Government requirement for all international students and their dependents, and needs to be paid prior to issue of your visa. You need to pay for cover equivalent to the duration of the program.

OSHC Worldcare is the preferred provider for international students at Bond University. They offer excellent services to students including an on campus representative who can process your claims or resolve any difficulties you may have with your health cover.

OSHC assists towards the costs of fees for doctors, surgery, shared hospital ward accommodation, emergency ambulance transport and some other medical services. You can opt to pay a higher level of private medical health insurance. This will give you extra cover for the cost of services such as optical treatment, physiotherapy, private hospital treatment with a doctor of your choice.

In some circumstances, Norwegian and Swedish students are exempt from OSHC. Please check with your local representatives.

OVERSEAS STUDENT HEALTH COVER (OSHC)*

	Single	Family
Up to 3 months	\$A93	\$A186
Up to 6 months	\$A185	\$A370
Up to 9 months	\$A278	\$A556
Up to 12 months	\$A309	\$A740

* Charges current at time of printing

INTERNATIONAL REPRESENTATIVES

For a list of Bond University representatives in your country, please go to www.bond.edu.au/contact/international/index.html or phone +61 7 5595 1024

UNDERGRADUATE DEGREE APPLICATIONS

All international students, including those already undertaking Year 12 in Australia, should lodge an application directly with the University by completing an Application for International Undergraduate Admission, available from the Office of Admissions or at www.bond.edu.au/admiss/applyform.htm.

Please note there is no application fee for Bond University. Applications should be accompanied by certified/notarised copies of supporting documentation and be sent to arrive no later than two weeks prior to the commencement of the relevant semester. For high-school leavers, assessment is based on a number of factors, including your secondary school qualifications in another country or in Australia. Bond University recognises a wide range of international qualifications - a full list is available on the website at www.bond.edu.au/international/study/entry-requirements.html. For mature-age students, relevant work experience will be considered upon submission of a current resume.

POSTGRADUATE DEGREE APPLICATIONS

International applicants will need to complete an Application for Postgraduate Admission and return it to the Bond University Office of Admissions or your local representative. Remember to include certified/notarised copies of supporting documentation, including evidence of English language proficiency if English is not your first language. Official translations must also be supplied if applicable.

FOR GENERAL ENQUIRIES:

School of Hotel, Resort and Tourism Management
Bond University
Gold Coast Queensland 4229
Australia

Ph: +61 7 5595 2266
Fax: +61 7 5595 1160
Email: tourism@bond.edu.au

FOR APPLICATIONS:

Office of Admissions
Bond University
Gold Coast Queensland 4229
Australia

Toll free 1800 074 074
(Within Australia)

Ph: +61 7 5595 1024
(from overseas)

Fax: +61 7 5595 1015

Email: information@bond.edu.au
(for domestic enquiries)

Email: international@bond.edu.au
(for international enquiries)

INVESTING IN YOUR FUTURE

Bond University is a not-for-profit, private, independent university which means that fees are able to be directly re-invested to provide outstanding education and facilities for students.

Tuition is charged at the beginning of each semester as you enrol. The amount of fees payable by international students are the same as those for domestic students. Students will need to meet the costs of living expenses, textbooks and other equipment but at Bond University, you will not need to budget for on-campus parking or the use of sporting facilities.

YOUTH ALLOWANCE/ AUSTUDY

If you are an Australian citizen or permanent resident aged 16 years or over and studying full-time, you are eligible to apply for Austudy/Youth Allowance benefits from the Commonwealth Government. For more information, contact Centrelink directly.

FEE-HELP

If you are an Australian citizen or a holder of a permanent humanitarian visa, you will be able to access the Australian Government's student loan program called FEE-HELP. FEE-HELP is an interest free loan that helps eligible fee paying students pay their tuition fees. The accumulated debt is indexed according to the Consumer Price Index (CPI).

Eligible students who wish to pay for part or all of their tuition fees through FEE-HELP must complete a 'Request for FEE-HELP assistance' form, including the provision of a tax file number and return with their 'Response to Offer' form. A student can then elect to pay a portion of fees directly to the University, and the remaining debt will be registered as a loan through the Australian Taxation Office.

The current maximum loan available through FEE-HELP as of January 2008, is AUD \$81,600. The loan is repaid to the Australian Taxation Office taking compulsory repayments through the taxation system when your repayment income exceeds AUD\$39,825 in a financial year. A 10% bonus is granted for any voluntary payments over AUD\$500. A loan fee applies for all Undergraduate subjects. Please visit www.goingtouni.gov.au to view the Government publications on FEE-HELP.



SCHOLARSHIPS

Bond University supports outstanding students through scholarships and other awards. Bond scholarships are normally awarded on the basis of outstanding academic achievement. However other factors may be taken into consideration. All scholarships relate to tuition fees only and do not cover other expenses such as accommodation, textbooks and living expenses.

Academic scholarships of up to 40% of tuition fees may be offered by the individual Faculty Deans. These scholarships are open to all students entering or enrolled at Bond University. Applications are considered on a semesterly basis, that is, for each of the three intakes per year to the University. Selection is based primarily on academic achievement, but the Faculties reserve the right to apply other criteria as appropriate. For more information, visit Faculty scholarship information at www.bond.edu.au/study/scholarships/index.html

For more information,
please contact:
OzTREKK
educational services
102 Sumac Lane
Perth, ON
K7H 3C7

Toll-free phone:
1-866-6987355

www.oztrekk.com
info@oztrekk.com



**BOND
UNIVERSITY**

CRICOS CODE 00017B